

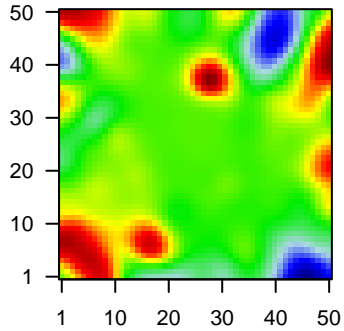
MPI-024

Global Summary

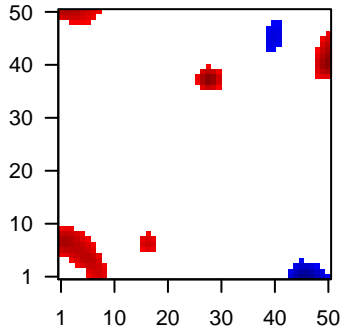
%DE = 0.06
 # genes with fdr < 0.2 = 775 (531 + / 244 -)
 # genes with fdr < 0.1 = 586 (412 + / 174 -)
 # genes with fdr < 0.05 = 391 (275 + / 116 -)
 # genes with fdr < 0.01 = 299 (211 + / 88 -)
 # genes in genesets = 13152

<FC> = 0
 <t-score> = -0.03
 <p-value> = 0.24
 <fdr> = 0.94

Portrait



Regulated Metagenes



Global Genelist

Rank	ID	log(FC)	fdr	p-value	Description
1	33307_at	-1.33	2e-16	3e-13	39 x 45 ribosomal RNA processing 7 homolog A [Source:HGNC Symbol;Acc:NCBI]
2	203290_at	2.01	2e-16	3e-13	7 x 0 major histocompatibility complex, class II, DQ alpha 2 [Source:HGNC Symbol;Acc:NCBI]
3	204372_s_at	-1.2	2e-16	3e-13	40 x 43 KH-type splicing regulatory protein [Source:HGNC Symbol;Acc:NCBI]
4	207900_at	2.73	2e-16	3e-13	3 x 6 C-C motif chemokine ligand 17 [Source:HGNC Symbol;Acc:NCBI]
5	209374_s_at	-2.01	2e-16	3e-13	0 x 22 immunoglobulin heavy constant mu [Source:HGNC Symbol;Acc:NCBI]
6	209825_s_at	-1.78	2e-16	3e-13	39 x 47 uridine-cytidine kinase 2 [Source:HGNC Symbol;Acc:HGNC]
7	210258_at	-1.88	2e-16	3e-13	49 x 40 regulator of G protein signaling 13 [Source:HGNC Symbol;Acc:NCBI]
8	210467_x_at	2.24	2e-16	3e-13	10 x 27 MAGE family member A12 [Source:HGNC Symbol;Acc:NCBI]
9	212064_x_at	-1.4	2e-16	3e-13	0 x 40 MYC associated zinc finger protein [Source:HGNC Symbol;Acc:NCBI]
10	212827_at	-1.82	2e-16	3e-13	41 x 44 immunoglobulin heavy constant mu [Source:HGNC Symbol;Acc:NCBI]
11	217469_at	2.4	2e-16	3e-13	49 x 20 immunoglobulin heavy constant epsilon [Source:HGNC Symbol;Acc:NCBI]
12	219256_s_at	-1.68	2e-16	3e-13	2 x 43 SH3 domain and tetratricopeptide repeats 1 [Source:HGNC Symbol;Acc:NCBI]
13	219277_s_at	2.2	2e-16	3e-13	35 x 31 oxoglutarate dehydrogenase like [Source:HGNC Symbol;Acc:NCBI]
14	219471_at	-1.22	2e-16	3e-13	42 x 49 RUN and cysteine rich domain containing beclin 1 interacting [Source:HGNC Symbol;Acc:NCBI]
15	220196_at	2.26	2e-16	3e-13	27 x 36 mucin 16, cell surface associated [Source:HGNC Symbol;Acc:NCBI]
16	220231_at	2.36	2e-16	3e-13	27 x 36 protein phosphatase 1 regulatory subunit 17 [Source:HGNC Symbol;Acc:NCBI]
17	207826_s_at	-1.17	4e-16	5e-12	43 x 49 inhibitor of DNA binding 3, HLH protein [Source:HGNC Symbol;Acc:NCBI]
18	211102_s_at	2.16	7e-16	5e-12	27 x 36 leukocyte immunoglobulin like receptor A2 [Source:HGNC Symbol;Acc:NCBI]
19	219753_at	1.46	9e-16	5e-11	49 x 39 stromal antigen 3 [Source:HGNC Symbol;Acc:HGNC:11356]
20	39318_at	-1.1	6e-15	5e-11	46 x 49 T cell leukemia/lymphoma 1A [Source:HGNC Symbol;Acc:NCBI]

Global Geneset Analysis

Rank	GSZ	p-value	#all	Geneset
<i>Overexpressed</i>				
1	10.17	NULL	4214	Chromatin states peripheral blood_15_Quiescent
2	10.13	NULL	3554	Chromatin states Rpts_ESC_Endoderm
3	10.05	NULL	6244	Chromatin states Fibroblasts
4	10.04	NULL	2325	Chromatin states_ZNF_Rpts
5	9.88	NULL	1535	Chromatin states peripheral blood_8_ZNF_Rpts
6	9.49	NULL	2974	Chromatin states_ESC_Endoderm
7	9.49	NULL	4559	Lymphoid states_OPP_Weak_enhancer
8	9.12	NULL	2548	Chromatin states_Het
9	9	NULL	3755	Chromatin states_Quiescent
10	8.97	NULL	7066	Chromatin states_fetal_midbrain_ReprPCWk
11	8.78	NULL	3106	Chromatin states_Colon
12	8.69	NULL	2626	Chromatin states_Rpts_ESC_Mesoderm
13	8.61	NULL	17	BP antigen processing and presentation of peptide or polysaccharide antigen fragments
14	8.57	NULL	7583	Chromatin states_Skeletal_Muscle
15	8.54	NULL	7581	Chromatin states_Melanocytes
16	8.47	NULL	4079	Chromatin states_ESC_Endoderm
17	8.4	NULL	18	CC MHC class II protein complex
18	8.3	NULL	1025	Chromatin states cells peripheral blood_8_ZNF_Rpts
19	8.26	NULL	2993	Chromatin states peripheral blood_9_Het
20	8.13	NULL	1004	Chromatin states regulatory cells peripheral blood_8_ZNF_Rpts
<i>Underexpressed</i>				
1	-9.27	NULL	254	GSEA C2DUTERTRE_ESTRADIOL_RESPONSE_24HR_UP
2	-9.02	NULL	244	GSEA C2KOBAYASHI_EGFR_SIGNALING_24HR_DN
3	-8.87	NULL	728	GSEA C2KRIGE_RESPONSE_TO_TOSEDOSTAT_24HR_DN
4	-8.64	NULL	314	GSEA C2PENG_GLUTAMINE_DEPRIVATION_DN
5	-8.31	NULL	280	GSEA C2MANALO_HYPOXIA_DN
6	-8.16	NULL	2704	Chromatin states_Fibroblasts
7	-7.65	NULL	270	GSEA C2FOURNIER_ACINAR_DEVELOPMENT_LATE_2
8	-7.49	NULL	14	Cancer SOTIRIOU_BREAST_CANCER_GRADE_1_VS_3_UP
9	-7.48	NULL	319	Melanoma Berber_wt/wt_melanoma-cells-SpotA
10	-7.4	NULL	651	GSEA C2KRIGE_RESPONSE_TO_TOSEDOSTAT_6HR_DN
11	-7.38	NULL	115	Glioma WILLSCHER_GBM_Verhaak-CL_up (C)
12	-7.24	NULL	466	GSEA C2BERENJENO_TRANSFORMED_BY_RHOA_UP
13	-7.12	NULL	137	GSEA C2ROSTY_CERVICAL_CANCER_PROLIFERATION_CLUSTER
14	-7.02	NULL	44	GSEA C2SCHLOSSER_MYC_TARGETS_AND_SERUM_RESPONSE_UP
15	-6.94	NULL	84	GSEA C2GRAHAM_NORMAL QUIESCENT_VS_NORMAL_DIVIDING_DN
16	-6.81	NULL	72	GSEA C2SCHUHMACHER_MYC_TARGETS_UP
17	-6.81	NULL	10	Lymphoid states_MASCQUE_ABC_UP
18	-6.63	NULL	78	GSEA C2MORI_IMMATURE_B_LYMPHOCYTE_DN
19	-6.59	NULL	703	GSEA C2LEE_BMP2_TARGETS_DN
20	-6.5	NULL	726	GSEA C2PUJANA_CHEK2_PCC_NETWORK

p-values

